

Heath Hayes & Wimblebury Parish Council
Opens Spaces & Sustainability Committee Meeting

Wednesday, 8th September 2021 at 1pm

Hayes Green Community Centre

Present: Cllr A Fitzgerald, P Haden, S Thompson and L Wilson

In Attendance:

Parish Clerk: Mrs L Bowman

1. Apologies

Apologies received from Cllr J Aston, M Buttery and D Todd

2. To Approve the Minutes of the Open Spaces meeting held on the 19th July 2021

The minutes of the meeting held on the 19th July 2021 were approved as a true record.

3. Update of works completed since the last meeting

- Devall Way, trimmed bushes cleared and around the sign.
- Badgers Way to Gorsemoor Primary School removed leaves and sprayed weedkiller along the fence.
- New Tape on the barrier at Cannel Mount.
- Cleared and cut back the alley that runs alongside the library.
- Rochester Drive Linked Pathway, trimmed bushes.
- Finished Kent Place, cleared block paving of moss and weeds.
- Primrose Meadow to Asquith Drive Linked Pathway, trimmed bushes.
- Cleeton Street, trimmed bushes.
- Newlands Park, trimmed bushes cleared around the sign.
- Arthur street cleared weeds along the road and path.
- Weeds Sprayed on Chapel Street and bushes trimmed on Hayes Way the section from Chichester Drive to the Island.
- The Bushes around the Wimblebury and Heath Hayes Sign had been trimmed.
- The planter on Bank Street had been trimmed
- The old gate at Cannel Mount had been chopped up and the bench had been sanded and revarnished.
- Moss and weeds removed along Chapel Street.

- Weeds around the old Flaggin Lamb, Wimblebury cleared by volunteers
- Alley by Five Ways School, Staffordshire Highways are working on clearing the path.
- Keys Park Road trim weeds, completed by CCDC.

4. Update Cannel Mount

- Cannock Chase Can and Inspiring Healthy Lifestyle had both completed site visits at Cannel Mount and mapped out planned Walks.

- The arrows had been erected to help find the woodland animals.

Hayes Green Community Centre, Heath Way, Heath Hayes

Phone: 07951409707 Email: clerk@hhandw.org.uk

5. Areas of improvement required within the Parish

a) Outstanding jobs from previous list

- Cutting back of weeds and bushes on the main Heath Hayes Car Park and Bank Street Car Park
This had been difficult to complete as cars were always parked on the car park.
- Repair & Stain Notice Board outside of the library

b) New List of jobs required

The clerk to request a cost for the parish to have an extra spray of weed killer in areas.



Ingestre close, cut bushes back

Bushes to the right of Salisbury Drive, effecting visibility.

Lichfield Rd, just past the Newhall Farm Pub, just the worst parts encroaching the path.



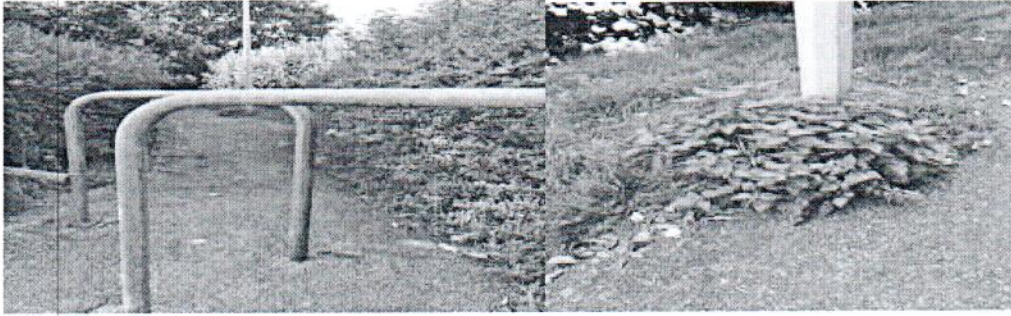
Weeding on Wimblebury Road



Cut Back Bushes on Hayes Way

Hayes Green Community Centre, Heath Way, Heath Hayes

Phone: 07951409707 Email: clerk@hhandw.org.uk

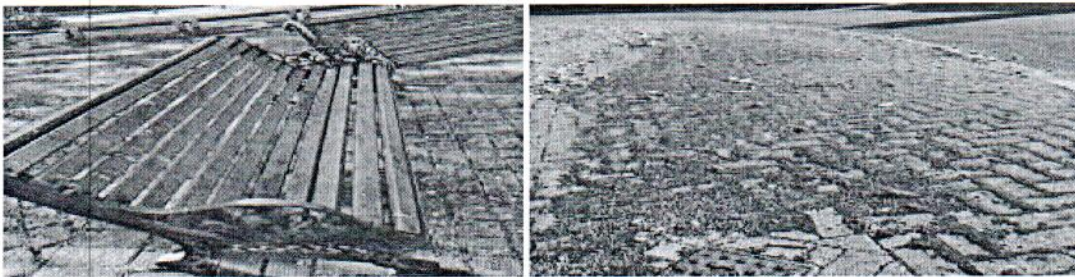


Rochester linked foot path cut back the nettles.

On the corner of Kington Road and Claygate Road, pavement needs clearing of weeds and moss.



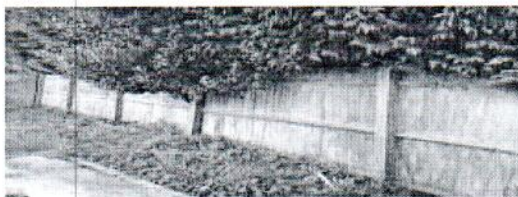
Kent Place, path on the right needs the moss scraping off and jet wash the Benches.



Clear entrance to alley by Five Ways School.

Bushes on the main road by the entrance to Milking Brook

Hedge on Gorsemoor Road overgrown by the park, Bus Stop is not visible.

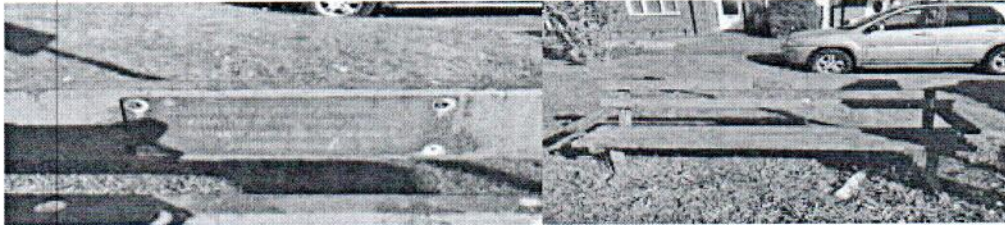


Brooklyn Road Car Park needs clearing of weeds.

Metal Bench on Brooklyn Road needs Painting

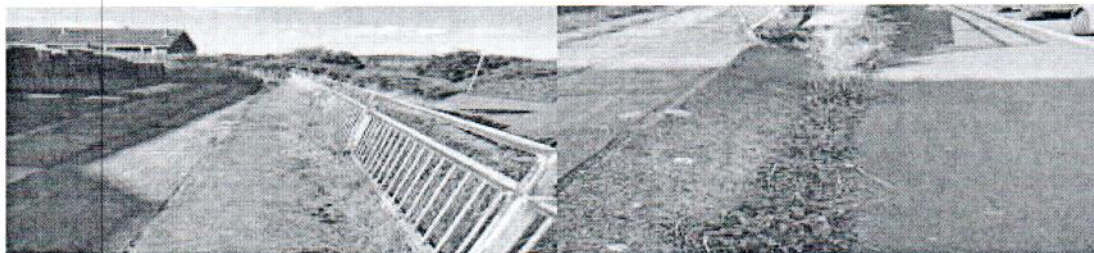
Hayes Green Community Centre, Heath Way, Heath Hayes

Phone: 07951409707 Email: clerk@hhandw.org.uk



Metal Bench on John Street, Wimblebury

John Street, Wimblebury



6. Litter Picking & Big Weed Event
 - 25th September 2021, Newlands Park Estate
7. Items for Information or Future Agenda's
8. Date of Next Meeting - Monday, 22nd November 2021 at 6pm

Signed: *Colin Meritt*

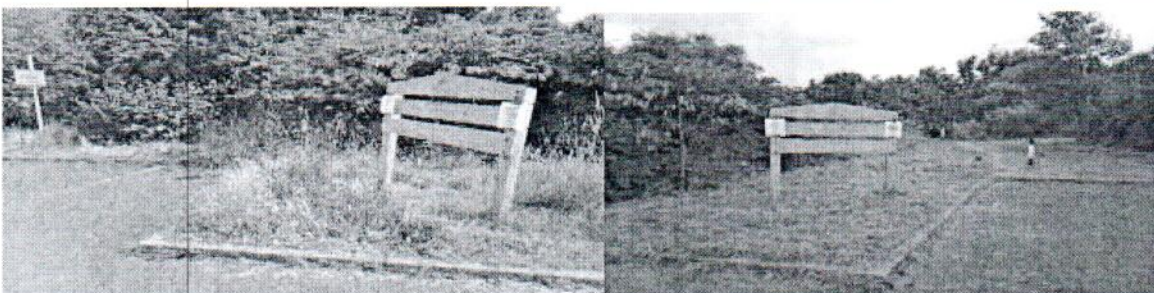
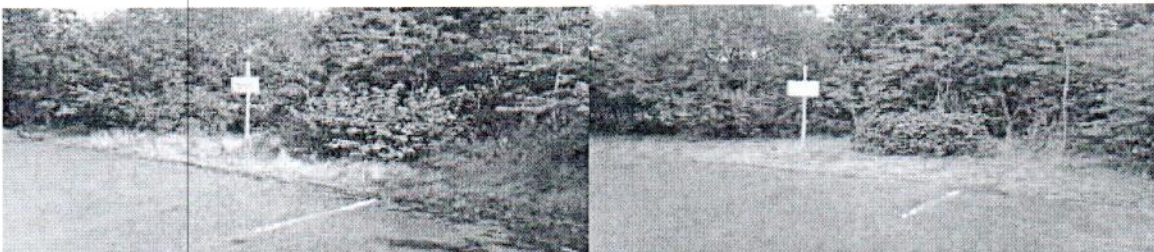
Dated: 15/12/21.

Hayes Green Community Centre, Heath Way, Heath Hayes

Phone: 07951409707 Email: clerk@hhandw.org.uk

Work Completed

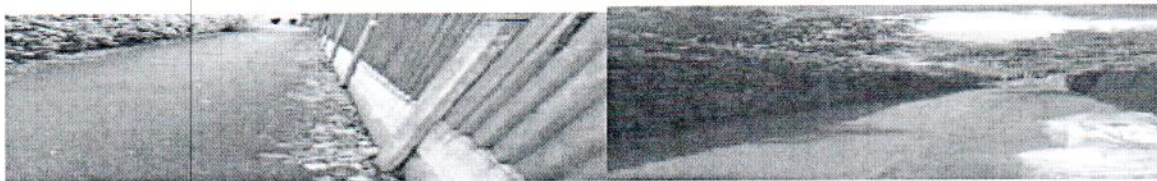
Around Devall Way



Hayes Green Community Centre, Heath Way, Heath Hayes

Phone: 07951409707 Email: clerk@hhandw.org.uk

Badgers Way to Gorsemoor Primary School, removed leaves and sprayed weedkiller along the fence to avoid nettles growing.



New tape on the barrier at Cannel Mount

Cleared and cut back the alley that runs alongside the library

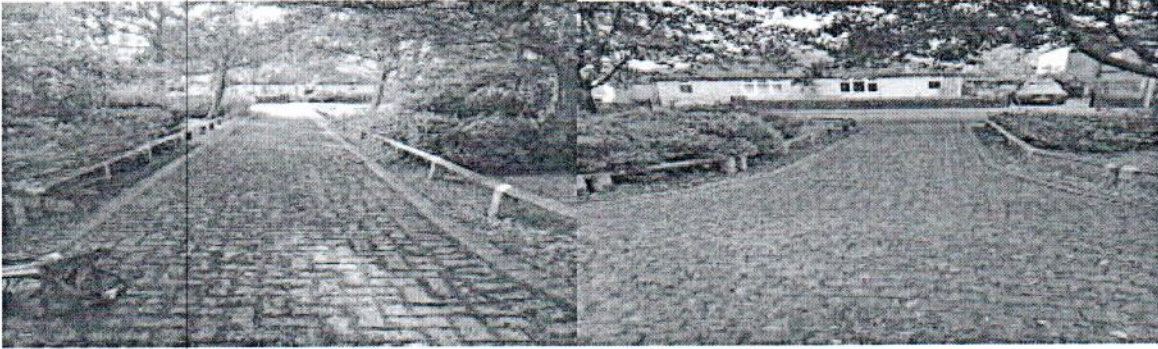


Finished clearing the moss at Kent Place

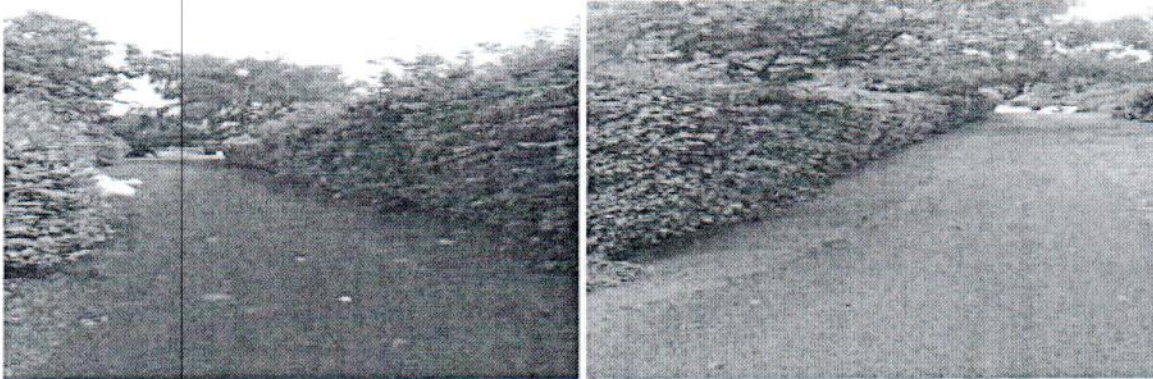


Hayes Green Community Centre, Heath Way, Heath Hayes

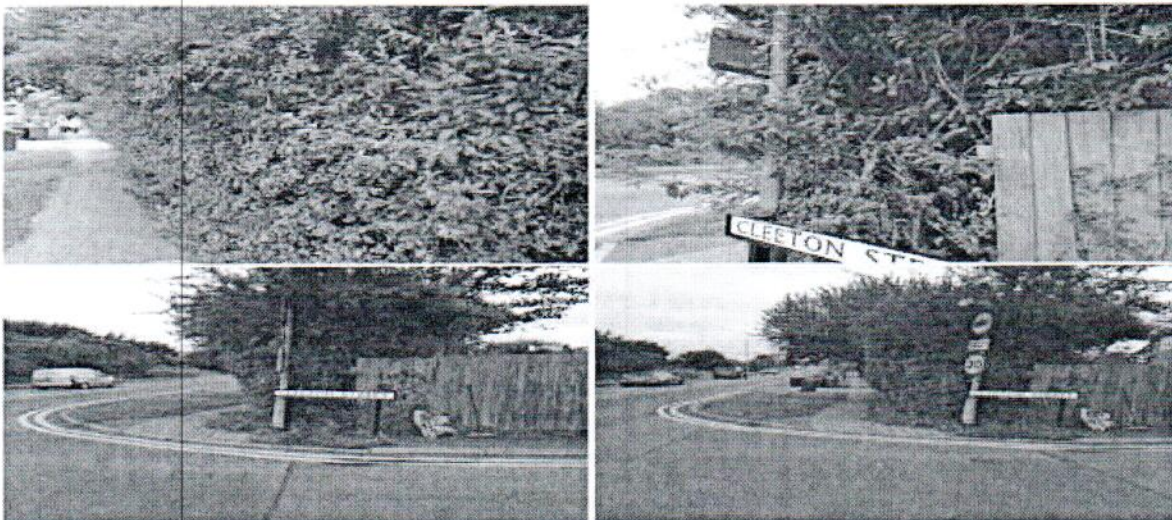
Phone: 07951409707 Email: clerk@hhandw.org.uk



Rochester Way



CleetonStreet



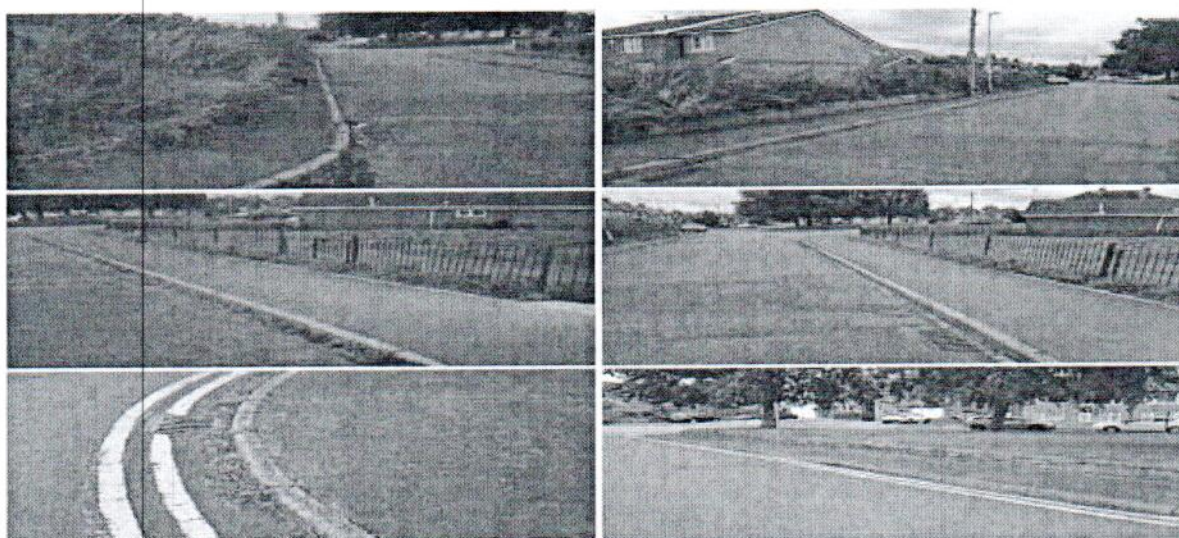
Hayes Green Community Centre, Heath Way, Heath Hayes

Phone: 07951409707 Email: clerk@hhandw.org.uk

Primrose Meadow to Asquith Drive



Arthur Street, Cleared weeds along the road and path.



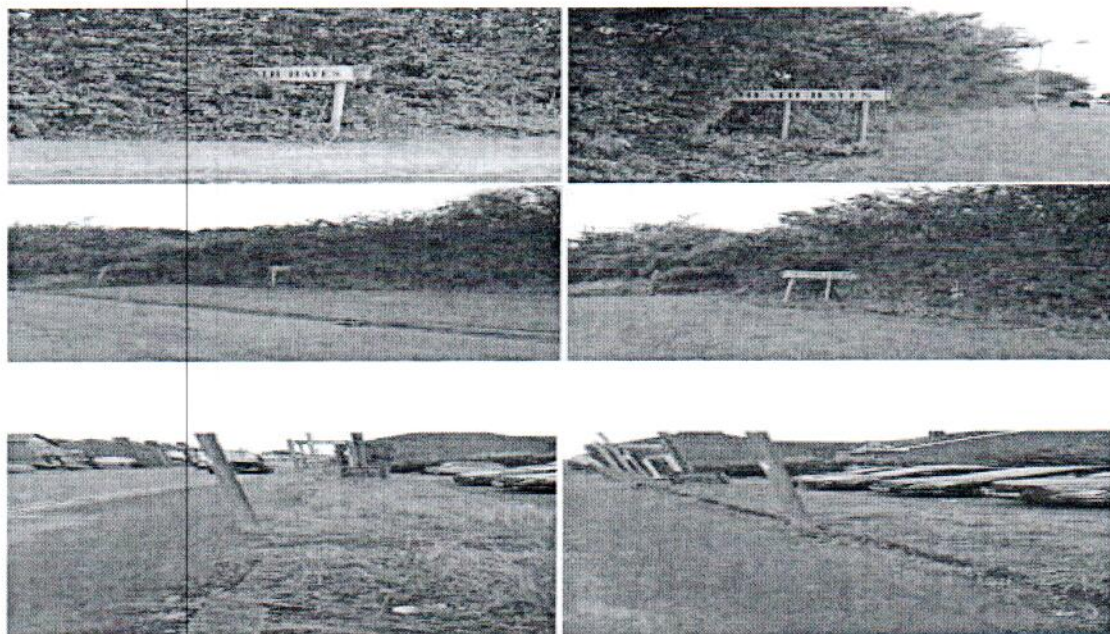
Hayes Green Community Centre, Heath Way, Heath Hayes

Phone: 07951409707 Email: clerk@hhandw.org.uk

Newlands Park strimmed the bushes around the entrance sign.

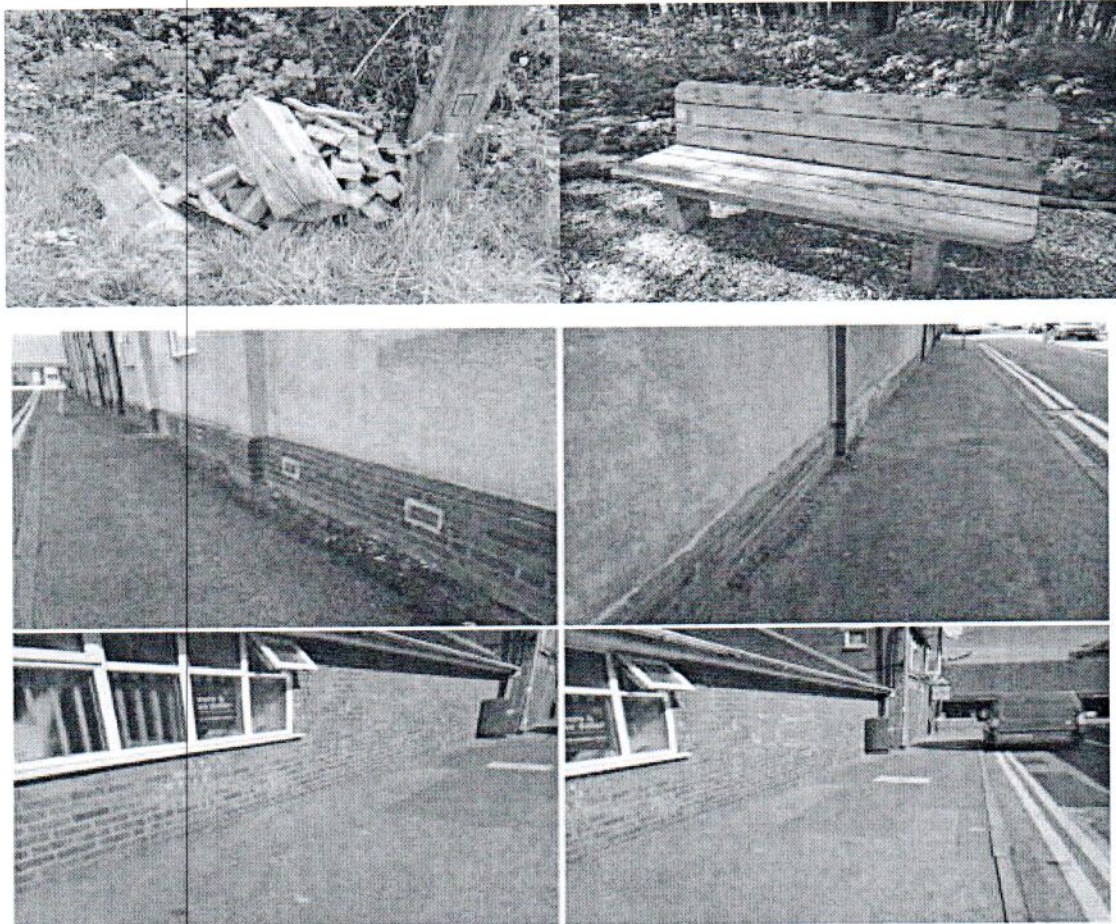


Weeds Sprayed on Chapel Street and bushes trimmed on Hayes Way the section from Chichester Drive to the Island.



Hayes Green Community Centre, Heath Way, Heath Hayes

Phone: 07951409707 Email: clerk@hhandw.org.uk

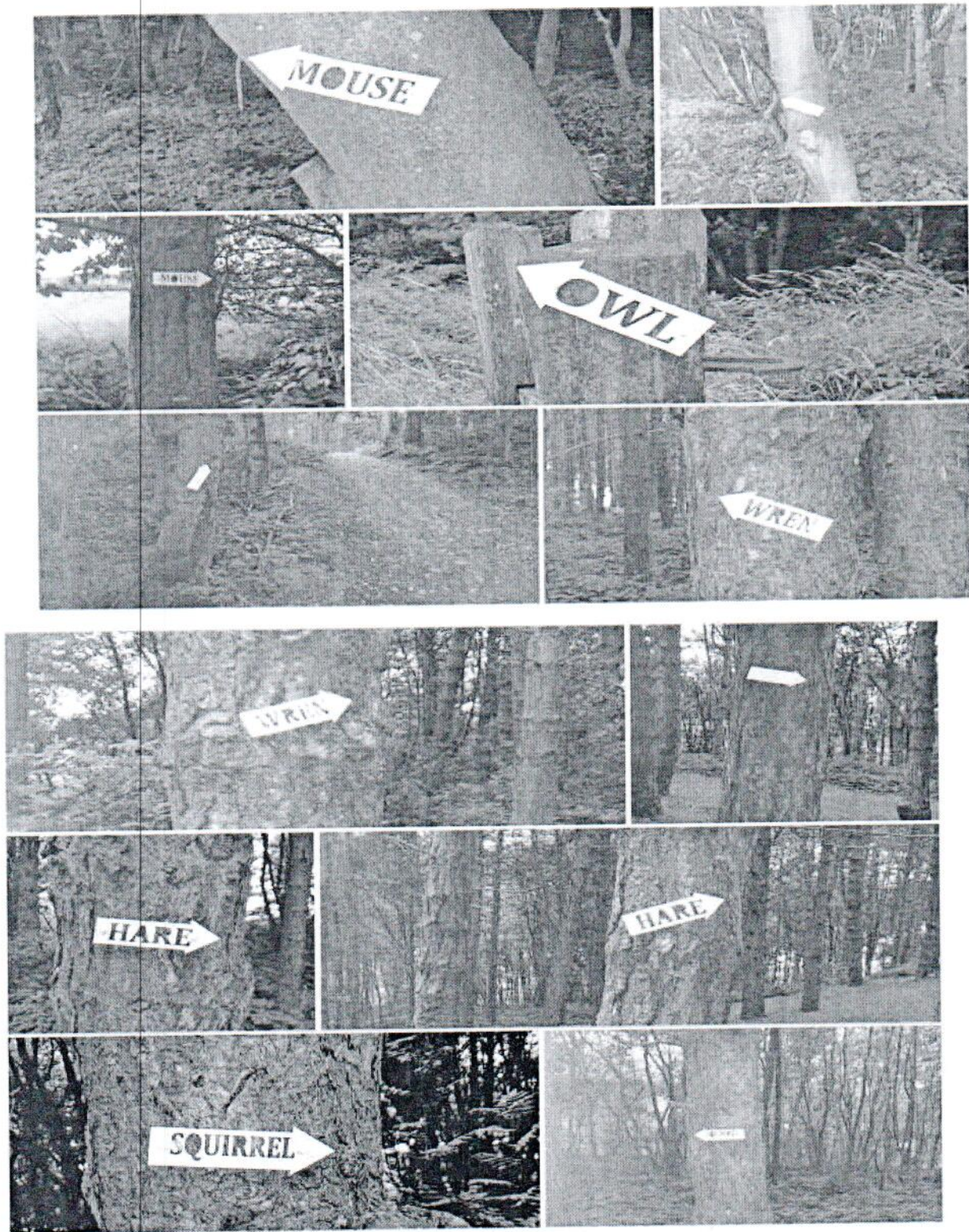


Hayes Green Community Centre, Heath Way, Heath Hayes

Phone: 07951409707 Email: clerk@hhandw.org.uk

Cannel Mount - Update

The arrows have been erected to help find the woodland animals.



Hayes Green Community Centre, Heath Way, Heath Hayes

Phone: 07951409707 Email: clerk@hhandw.org.uk