

Heath Hayes & Wimblebury Parish Council
Opens Spaces & Sustainability Committee Meeting
Monday, 19th July 2021 at 6pm
Hayes Green Community Centre

Present: Cllr P Haden, Cllr S Thompson, Cllr D Todd and L Wilson

In Attendance:

Parish Clerk: Mrs L Bowman

1. Apologies

Apologies received from Cllr J Aston, M Buttery and A Fitzgerald

- 2. To Approve the Minutes of the Open Spaces & Sustainability meeting held on the 24th May 2021**
The Minutes of the meeting held on the 24th May were approved as a true record.

3. Update of works completed since the last meeting

Meadow Way, trimmed bushes.



Thistledown Drive, trimmed bushes.



Started Kent Place.



Hayes Green Community Centre, Heath Way, Heath Hayes

Phone: 07951409707 Email: clerk@hhandw.org.uk

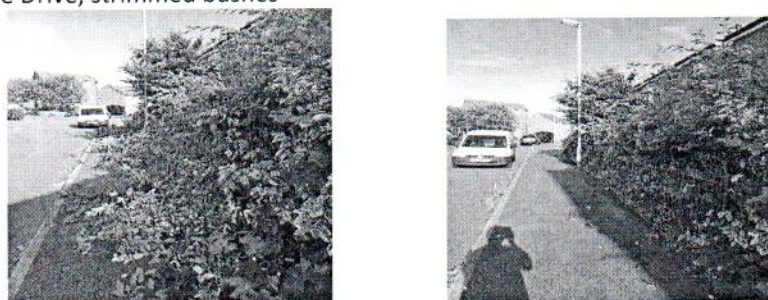
Rochester Drive Linked Pathway, trimmed bushes



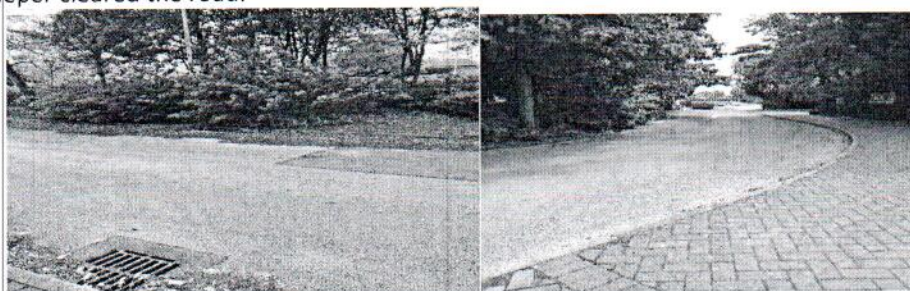
Salisbury Drive, trimmed bushes



Capercaillie Drive, trimmed bushes



Access road in front of the Hayes Green Community Centre, Cannock Chase District Council's road sweeper cleared the road.



4. Update Cannel Mount

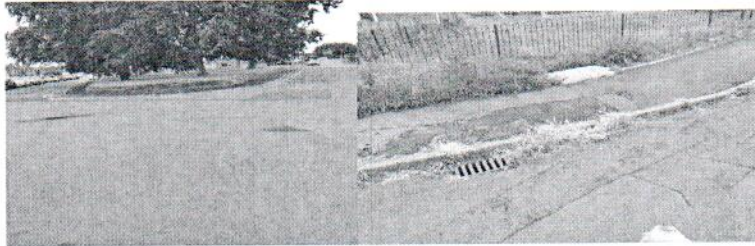
The Committee were update of works at Cannel Mount, all wooded sculptures had been finished, the two wooden benches had been installed and varnished. The new sign had been installed and varnished, the litter bin and poo bag dispenser had been installed and the handyman advised that it had been used.

Hayes Green Community Centre, Heath Way, Heath Hayes

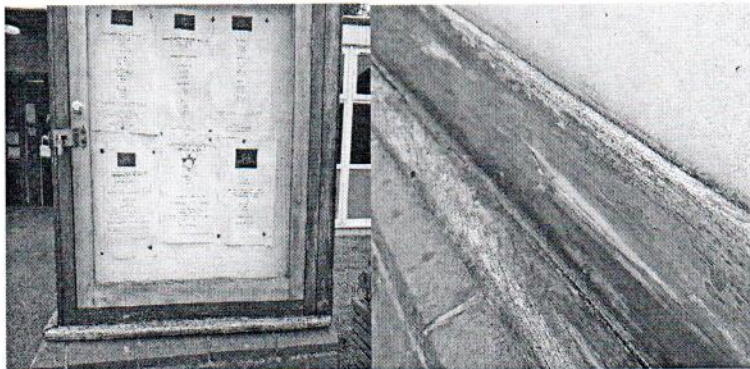
Phone: 07951409707 Email: clerk@hhandw.org.uk

5. Areas of improvement required within the Parish

Councillors provided a list and photographic evidence of areas that required improving.



- Arthur Street clear weeds on the road.



- Repair & Stain Notice Board outside of Heath Hayes Library



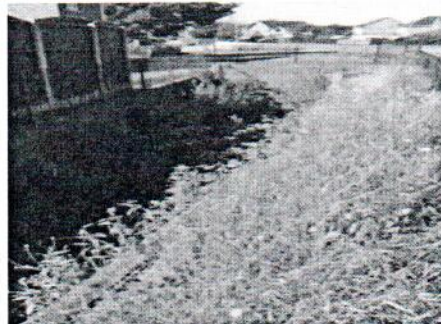
- Clear and cut back the alley that runs alongside the library

Hayes Green Community Centre, Heath Way, Heath Hayes

Phone: 07951409707 Email: clerk@hhandw.org.uk

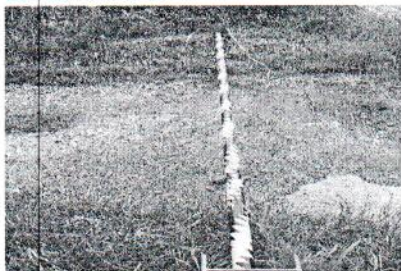


- John Street/Keys Park Road, just off the island.



- Keys Park Road
- Primrose Meadow off Sidon Hill, cut back bushes on the passageway at the end of Primrose Meadow which links to Asquith Drive, 3/4 way along the road on the left side (with your back to Sidon Hill) the bushes are right across the pavement
- Rochester Way first pathway on the left-hand side, linked pathway Rochester Way to Heath Way.
- Trim back the bushes from the Wimblebury sign up on the island as you come from Wimblebury Road
- Car Park on Bank Street
- Welcome to Wimblebury Road sign by the roundabout on the Wimblebury Road.
- Cannock Road turning onto Cleeton Street the bush had been cut back but requires a tidy up.

Cannel Mount



New Yellow tape around the Bar

Hayes Green Community Centre, Heath Way, Heath Hayes

Phone: 07951409707 Email: clerk@hhandw.org.uk



Remove Old Sign & Gate



Sand and re-stain bench

- Stim Cannel Mount Bramble



Weeds around the old Flaggin Lamb – Cllr Thompson would report to the District Council



Alley by Five Ways School - Cllr Thompson would report to Staffordshire Highways

6. Litter Picking

The Committee identified Cannel Mount and the surrounding area for the next monthly litter pick.

- 31st July 2021

7. Create an up-to-date map of local walking and cycle tracks withing the Parish

Cllr Haden to contact Inspiring Health Lifestyles.

8. Items for Information or Future Agenda's

9. Date of Next Meeting - Monday, 20th September 2021 at 6pm

SIGNED *J. Haden*

DATED 15/12/21

Hayes Green Community Centre, Heath Way, Heath Hayes

Phone: 07951409707 Email: clerk@hhandw.org.uk